

## President's Message

KPHA is Kentucky's premiere membership organization for public health professionals. I feel that KPHA is well positioned to lead our state in public health advocacy and professional development for its members. Our strength is in our numbers and our passion for public health speaks volumes.

It really has been a great honor serving in the capacity as your president over the past year. I look forward to continuing to serve as an advocate for KPHA and all of public health into the future.

This year we are excited as we move the conference to a new venue located in Northern Kentucky – this will be the KPHA 70<sup>th</sup> annual educational conference. I invite you to get more involved in KPHA beyond being a member – join an area of interest, join a committee, express interests in leadership opportunities. As a volunteer organization, KPHA is only as great as WE make it!



Mark Hensley

If you need anything from KPHA, please don't hesitate to contact me or our office in Frankfort. Visit our website at [www.kpha-ky.org](http://www.kpha-ky.org) for more information. I look forward to seeing all of you this April in Northern Kentucky.

**Mark Hensley, RS, MPH**

**2017/2018 KPHA President**

*The 70th Annual  
KPHA Conference  
is April 25-27,  
2018 at the  
Northern  
Kentucky  
Convention  
Center!*

### In This Issue

- KPHA Membership
- KPHA 2018 Conference Registration
- 2018 KPHA Conference Keynote Speaker
- Call for Abstracts
- Northern Kentucky
- Conference Sponsorship & Exhibitors
- KPHA Scholarships
- KPHA Awards
- PHAB News
- Like and Follow KPHA on Facebook!
- KPHA Silent Auction
- KPHA Leadership

Membership Type	Dues (1 year)	Dues (2 years)
Individual	\$40	\$70
Organizational (12 members; e.g., health departments, universities, businesses, non-profits)*	\$350	\$600
Local Governing Agency (12 members; e.g., Boards of Health, Fiscal Courts, City Commissions)*	\$200	N/A
Students (Full-Time)	\$20	N/A
Large Organization (120 members)*	\$3,500	N/A
<b>2018 Membership Rates</b>		

## KPHA Membership

By: **Carla Tillett**

*KPHA Membership Specialist*

In case you forgot, your KPHA membership dues payment for 2018 was due **December 31**.

You can renew easily on our website [www.kpha-ky.org](http://www.kpha-ky.org). Just click on the “Member Login” tab in the upper right hand corner and enter your login name and password. You will be asked to establish a login name and password if you haven’t done so already. You may then proceed to renew on-line. If you have forgotten your Login Name, the KPHA office staff will be happy to provide you with it; please contact Carla Tillett or Jill LeMaster at 502-875-2255, or through email at [ctillett.kpha@gmail.com](mailto:ctillett.kpha@gmail.com) or [jlemaster.kpha@gmail.com](mailto:jlemaster.kpha@gmail.com). We urge you not to create a new account; doing so will cause you to have two accounts which will not reflect your renewal payment in our records.

If you choose to renew by using a check and the postal service, please print and complete a membership application/renewal brochure, which also can be found on the website at [www.kpha-ky.org](http://www.kpha-ky.org), under the “About KPHA” tab. Mail your completed renewal form to Carla Tillett, P.O. Box 4647, Frankfort, KY 40604, with your check. She will submit the information for you! If you need us to mail you a renewal form, please notify us at the numbers above.

Current membership rates are listed in the chart above.

New members may use the website [www.kpha-ky.org](http://www.kpha-ky.org) to join by clicking on the “Join KPHA” tab. Please feel free to call the office staff listed above if you have questions.

## Conference Registration

By: **Sara Jo Best, RS, MPH**  
*KPHA President-Elect*

Early-bird registration is available until **April 6, 2018**. Registration is available at [www.kpha-ky.org](http://www.kpha-ky.org) and fees are:

- Member Early Registration- \$200
- Member Late Registration- \$250
- Non-member Early Registration- \$250
- Non-member Late Registration- \$300
- Student Registration- \$30
- Life Member Early Registration- \$100
- Life Member Late Registration- \$125

Rooms are now available at the Marriott RiverCenter and the Embassy Suites RiverCenter. To book your rooms at a KPHA discounted rate of \$135, visit <http://www.kpha-ky.org/Conference.aspx> or call 877-465-9282, by March 30, 2018.



# SAVE THE DATE

- Northern Kentucky Convention Center
- April 25-27, 2018



**70<sup>th</sup> Annual  
Kentucky  
Public  
Health  
Association  
Conference**

*"Creating  
Resilient and  
Healthy  
Communities"*

## 2018 KPHA Conference Keynote Speaker: **Curtis Zimmerman**

By: Cynthia Lamberth, PHDc, MPH, CPH



KPHA in collaboration with the Kentucky Population Health Institute and the Kentucky Population Health Leadership Institute (KPHLI) brings Curtis Zimmerman, inspirational speaker and author as our opening Keynote speaker on April 25<sup>th</sup>. Curtis delivers one of the most dynamic interactive and entertaining programs on America's lecture circuit today. Laugh, juggle, and play Simon Says, but don't be fooled by all the fun. Curtis' messages are substantive and far-reaching. Be prepared to be empowered, challenged, and changed.

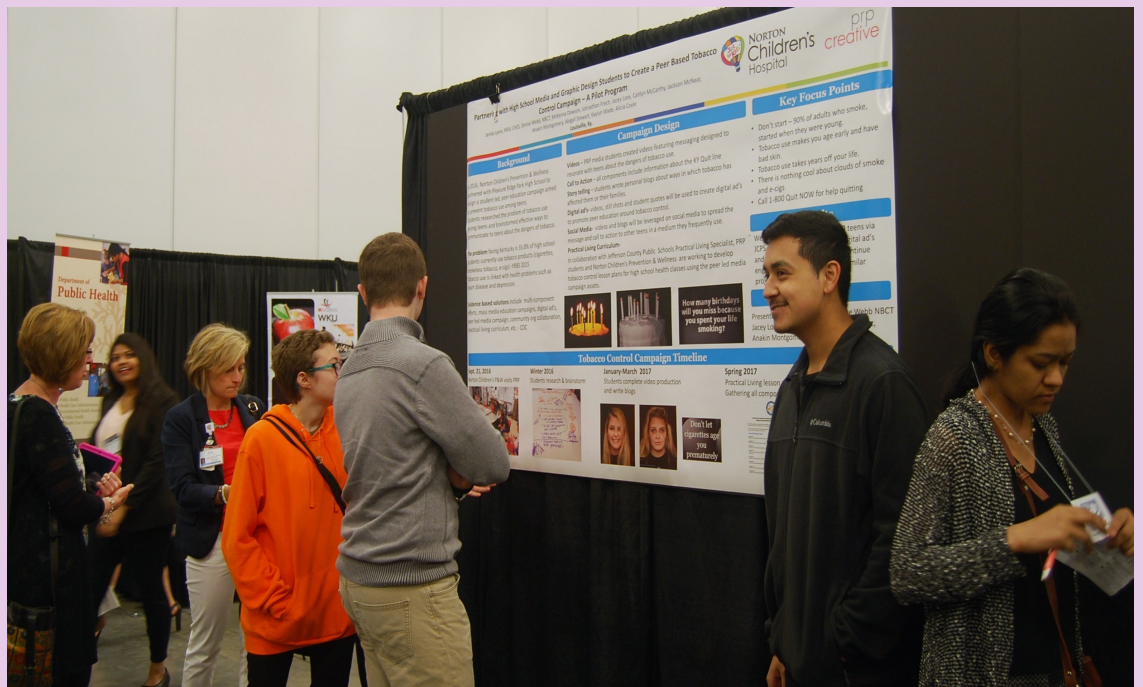


As a speaker and best-selling author, Curtis Zimmerman has impacted over one million people around the globe with his life-changing message. He expertly accelerates culture change, energizes organizations and inspires greater accountability to keep companies competitive and focused. Audiences connect with Curtis through his high energy, interactive style, and approachable manner. He incorporates the skills he gained from over twenty-five years in the entertainment industry as a nationally-recognized mime, juggler, and fire-eater into his powerful programs. Zimmerman is a highly sought after speaker among Fortune 100 companies such as JC Penney, Kroger, General Electric, Walt Disney Entertainment, and Procter and Gamble, as well as more than 20,000 Airmen in the United States Air Force. He is the author of three books, including his #1 nationally best-selling book *Life at Performance Level* which the KPHLI scholars are reading this year. Curtis is a member of the Global Speakers Federation (GFS) and the National Speakers Association (NSA), from which he has achieved the highest-earned recognition reserved for the top ten percent of professional speakers across the nation, the Certified Speaking Professional (CSP) designation. Curtis currently resides in the greater Cincinnati area with his wife and three children.

# Call For Session Proposal Abstracts & Poster Presentation Applications

Abstracts for conference session proposals and poster presentation applications are due **February 16, 2018**.  
Submit at:

<https://www.surveymonkey.com/r/8GBGQ9X>







## Northern Kentucky

By: Louise Kent, MBA

*KPHA Board of Directors*

Looking for something to do in the evenings during the 2018 KPHA Conference? Well, keep checking in on the KPHA web site at [www.kpha-ky.org](http://www.kpha-ky.org) or find out about some special opportunities that are being prearranged for you!

Conference planners are currently working to set up group evening outings to local Northern Kentucky and Cincinnati venues, such as a Reds game, a Gangster Tour, and a few other fun and interesting experiences (to be disclosed at a later time). You'll need to sign up and pay your own way for these experiences, but we think you'll enjoy these evenings out with colleagues you know and those you'll meet for the first time. Details will be shared with everyone as we get closer to the 2018 KPHA Conference in April.



# Conference Exhibits/Sponsorship Packages

The Kentucky Public Health Association is proud to announce our 70th annual conference being held at the [Northern Kentucky Convention Center](#) in Covington, KY, April 25-27, 2018. The conference brings together public health professionals from across Kentucky and surrounding states with the common goal of giving public health practitioners the best continuing education opportunities available anywhere. Complete details are located on our [website](#). [Click here](#) to register today!



<b>Diamond (\$5000)</b>	<b>Platinum (\$2500)</b>	<b>Gold (\$1000)</b>
Exhibit table, Full color back cover ad in program	Exhibit table, 1/2 page color ad in program	Exhibit table, 1/4 page color ad in program
Four Complimentary Conference Registrations*	Two Complimentary Conference Registrations*	One Complimentary Conference Registration*
Link on KPHA website for one year to your business or social media page	Link on KPHA website for one year to your business or social media page	Social media spotlight on KPHA Facebook site; Recognition on conference page of KPHA Website
Acknowledgement at the conference awards luncheon on hotel signage	Acknowledgement at the conference awards luncheon on hotel signage	Acknowledgement at the conference awards luncheon on hotel signage

## LOCAL HEALTH DEPARTMENTS PACKAGE

For \$300, local health departments will get a 1/4 page ad in the conference program and an exhibit booth!

## EXHIBIT ONLY PACKAGE

For \$600 (For Profit) or \$300 (Not for Profit), exhibitors will receive: 10X10 table/booth with draped table, two chairs and identification sign, free WIFI (electricity available for additional fee), one complimentary registration\*, and company description and contact information in our program

## FRIENDS OF KPHA

For a sponsorship of \$150, Friends of KPHA get their name/company in the conference program

*\*Conference Registration includes all sessions, awards luncheon (April 26, 2018), exhibitors reception, and all social activities.*

**SPACE IS LIMITED, SO REGISTER TODAY! DEADLINE IS MARCH 30, 2018**

FOR QUESTIONS, CONTACT BRANDI GILLEY, [BrandiN.Gilley@ky.gov](mailto:BrandiN.Gilley@ky.gov), 606-878-7754 OR STEVE BING, [sbing.kpha@gmail.com](mailto:sbing.kpha@gmail.com), 502-875-2255

Applicants must submit:

- their application
- official college or university transcript
- three (3) letters of support or recommendation

- Due March 1, 2018

- Mail to:

Kentucky Public Health Association (KPHA)

P.O. Box 4647

Frankfort, KY  
40604

- For more information visit:

<http://www.kpha-ky.org/Scholarships.aspx>

## KPHA Scholarships

By: **Kayla Bebout, MPH**

*KPHA Scholarship Committee Chair*

KPHA is pleased to announce three scholarship opportunities.

1. **Ellen M. Buchart Scholarship:** named in memory and honor of Ellen Buchart who served Kentucky Public Health Association (KPHA) in many capacities, including as a past President. This scholarship will be administered by KPHA in the amount of \$2,000 and is payable at the rate of \$1,000 per semester paid directly to the student's school to provide general academic assistance for one year.

Eligibility requires an awardee to be enrolled as a junior, senior, or graduate student with a health or science related major. Preference will be given to students in the public health programs at their respective college or university. Applicants must be a member of KPHA to be awarded the scholarship.

2. **Public Health Workforce Development Scholarship:** administered by KPHA in the amount of \$2,000 and is payable at the rate of \$1,000 per semester paid directly to the student's school to provide general academic assistance for one year.

Eligibility requires an awardee to be employed by a local health department, public health organization, or health related agency. Preference will be given to students looking to enhance their education in the public health field in which they serve. Applicants must be a member of KPHA to be awarded the scholarship.

3. **Theodore "Ted" Hanekamp Scholarship:** named in memory of and honor of Theodore "Ted" Hanekamp who devoted his entire career to public health. In 2006, Ted was inducted into the University of Kentucky College Public Health Hall of Fame (UKCPH). Ted was also very active in the Kentucky Public Health Association (KPHA). This scholarship will be administered by KPHA and the amount will be based upon funds raised by KPHA and matched by UKCPH not to exceed \$10,000 each calendar year.

Eligibility requires an awardee to be enrolled as a full-time graduate student in the College of Public Health at the University of Kentucky with a minimum of 9 hours of graduate classes. Applicants must also be a member of KPHA to be awarded the scholarship.



# 2018 KPHA Award Nominations

By: Jennifer Gulley, BSN, RN, AE-C

KPHA Award Committee Chair

Happy New Year!! Although the new year has just begun, the 2018 KPHA Conference is just around the corner. Please take some time to consider the contributions to public health by your co-workers or peers and nominate them for a KPHA Award using the attached Award Nomination Form. The nomination form, award categories, guidelines, previous award winners, as well as other information is available at <http://www.kpha-ky.org/Awards.aspx>. Our new award category, Outstanding Epidemiologist of the Year, has been added to the category listing. The deadline to submit a nomination is **Monday, February 19, 2018**. All nominations should be sent to [jen-niferh.gulley@ky.gov](mailto:jenniferh.gulley@ky.gov). Please share this information far and wide in your organization and among public health colleagues. The KPHA Conference will be held in Covington, KY April 25-27, 2018.

If you have any questions, please feel free to get in touch with me or any Awards Committee Member listed below. Award categories, descriptions and guidelines are as follows:

## **Administrative Support Staff Award:**

To honor someone who has made outstanding contributions in the field of administrative support for public health. Guidelines: Nomination must demonstrate exceptional service.

## **Bill Patton Environmental Service Award:**

To honor a person who has demonstrated exceptional performance, outstanding achievements and meritorious service in Environmental Services. Bill Patton worked tirelessly as an environmentalist in southeastern Kentucky from the early 1980's until his death in 2001. Bill truly believed that he could improve the environmental health of all Kentuckians. Guidelines: Nomination of someone who has clearly demonstrated the above referenced achievements.

**Elbert "Al" Austin, Jr. Career Achievement Award:** To honor a person who remains humble among peers yet towers above the rest in achievements. Al Austin was health cabinet secretary in the 1980's. Guidelines: Demonstrates loyalty and perseveres in working to improve public health for all Kentuckians.

## **Helen B. Fraser Award:**

To honor an individual who has made an exceptional contribution to the health and well-being of mothers and children in Kentucky. Dr. Fraser was state MCH director from 1956 until her death in 1965. Guidelines: Nominee must have made a unique and outstanding contribution to the growth and development of Kentucky maternal and child health – beyond standard requirements of employment or through voluntary work.

## **KPHA Group Award:**

To honor a designated group or organization that has collectively contributed to public health program development, toward enhancement of public health in the Commonwealth. Guidelines: Efforts must be well-described and include evidence of continued health contributions.

## **Outstanding Public Health Nurse Award:**

To honor an outstanding nurse in our Commonwealth. Guidelines: Nomination should reflect extraordinary work skills in public health nursing.



Thank you,

KPHA Awards  
Committee

*Jennifer Gulley,  
Chairman*

*Tammie Bertram*

*Randy Gooch*

*April Harris*

*Crystal Miller*

## KPHA Awards (continued)

### **Outstanding Epidemiologist of the Year Award:**

To honor someone who is considered to have ongoing excellence in epidemiologic practice demonstrated by consensus of peers, leadership, or other colleagues AND either or both of the following impacts:

1. significant impact in an area of expertise or on epidemiology practice across the state (improvement to epi practices in Kentucky, increasing the epi capacity to respond to public health issues, events or crisis, coordination of a significant or large-scale epi response, contributions to overall epi operations or processes in KY)
2. Significant impact on the health of the population of Kentucky (imputed or quantifiable reductions in morbidity or mortality for a particular outcome based epi practice, imputed or quantifiable improvements in health or health practices due to epi practices, significant epi contributions to apply practices that will have a long-term impact on the health of Kentuckians)

### **Paul Mason Memorial Award:**

To honor a Kentuckian who has made a significant contribution to benefit our most vulnerable population – the indigent and uninsured. Guidelines: The nomination must clearly reflect the above contributions to this target population.

### **Peggy S. Kidd Nutrition Award:**

To honor a nutritionist for outstanding professional contributions and service in public health. Guidelines: The nomination must reflect cooperation with other agencies and groups; public health advocacy; and all other activities that demonstrate support for public health through effective organizational skills.

### **Russell E. Teague Award:**

To honor and recognize exceptional and meritorious achievement in the field of public health. Dr. Teague was Kentucky Health Commissioner from 1956-1970. Guidelines: Well-recognized contribution to the improvement of public health; must reflect innovative and creative approaches with an impact on continued growth.

### **Sara C. Stice Award:**

To honor an individual who has made an outstanding contribution in the field of health education in Kentucky. Sara B. Stice was state Director of Health Education from 1950 until her retirement in 1973. Guidelines: Active in the field of health, and has made an exceptional contribution in health education.

### **Virginia Dodd Rice Award:**

To honor someone who has provided exceptional Home Health services in Kentucky, primarily through public health settings. Guidelines: Nomination of someone who clearly has a caring attitude and sensitivity to the needs of the community and the populations served by Home Care services. While a professional degree is commendable, this should not serve as the primary contributing factor for a nomination.







# News from PHAB

By: April Harris, MPH  
KPHA Secretary

The Public Health Accreditation Board celebrated 10 years of improving and protecting the health of communities by advancing the quality and performance of the nation's state, local, Tribal, and territorial public health departments on December 6, 2017. Since PHAB's incorporation in 2007 more than 213 million people across the United



States -- or nearly 70 percent of the U.S. population -- are now reaping the benefits of being served by a health department that meets PHAB's rigorous national standards for delivering quality programs and services to their communities.

At the reception, held at the National Press Club, Kentucky was well represented with April Harris (KPHA Secretary), Dr. Georgia Heise (former KPHA Director) and Lindsey Tirey (KPHA member).

Congratulations to the Laurel County Health Department on achieving accreditation status on November 14, 2017. Mark Hensley, LCHD Director, is the current KPHA President and Brandi Gilley, LCHD Accreditation Coordinator, serves in many capacities with KPHA.

Three Kentucky health departments will continue their journey to re-accreditation during the Spring of 2018 – Franklin County Health Department, Northern Kentucky Health Department, and Three Rivers District Health Department – who were included in the first national cohort of accredited health departments in February 2013.



## Like & Follow

### **Kentucky Public Health Association**

By: Janie Cambron, RS, MPH

*KPHA Vice President*

Be sure to like and follow Kentucky Public Health Association on Facebook and Twitter. Use **#KPHA2018** to share 2018 KPHA Conference preparations, photos and memories.



Like

# KPHA Silent Auction

By: **Brittany Parker, MPH**  
*KPHA Silent Auction Chair*

This year, let's do something a little different! I took some notes from Southern Health Association (SHA) Silent Auction last year and would like to sell raffle tickets for a YETI (or Ozark, depending on the amount of money raised) cooler. Here is how it would work for ONE of the two donations asked of board members you can donate money/cash or a VISA gift card to purchase a YETI cooler. Please send donations by Friday, March 16<sup>th</sup> to:

Franklin County Health Department  
ATTN: Brittany Parker  
100 Glenss Creek Road  
Frankfort, KY 40601

Once I have received the money I purchase whatever size YETI that I can with the money donated. If there is extra money, I will purchase items to be raffled off inside of the YETI. If there is not enough money, I will purchase an Ozark Cooler or work on a basket to be raffled off. Either way, the money will be used for a raffle to be held at the conference.

Additionally, KPHA members can sell raffle tickets prior to the conference and bring money and contact info to the conference with you. Tickets will be 1 for \$1, 6 for \$5 or 25 for \$20.

In addition to the donation for the cooler, board members are asked to donate one more item to the silent auction. We have had some great donations in the past. Don't be afraid to reach out to your local businesses asking for donations. They are usually more than happy to donate. Please don't hesitate to reach out to me at [BrittanyN.Parker@ky.gov](mailto:BrittanyN.Parker@ky.gov) if you have any questions. Also, you still have the option of donating two items like in years past.

Let's make this our best year yet!

---

**ATTENTION KPHA  
BOARD  
MEMBERS**

---



# KPHA Leadership



**President**

Mark Hensley

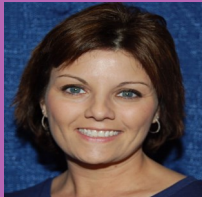
[MarkA.Hensley@ky.gov](mailto:MarkA.Hensley@ky.gov)



**President Elect**

Sara Jo Best

[SaraJ.Best@ky.gov](mailto:SaraJ.Best@ky.gov)



**Treasurer**

Lisa Pollock

[LisaC.Pollock@ky.gov](mailto:LisaC.Pollock@ky.gov)



**Vice President**

Janie Cambron

[Janie.Cambron@ky.gov](mailto:Janie.Cambron@ky.gov)



**Secretary**

April Harris

[AHarris@phaboard.org](mailto:AHarris@phaboard.org)



**Past President**

Drew Beckett

[AndrewB.Beckett@ky.gov](mailto:AndrewB.Beckett@ky.gov)

# 2018 KPHA Leadership Election

By: Dennis Chaney, MPA

KPHA Nominations and Election Committee Chair

Our Kentucky Public Health Association (KPHA) has been blessed throughout the years with leaders (women and men) who meet the intent of First Lady Eleanor Roosevelt's quote! Please give careful consideration to your personal desire to continue your journey of leadership development by submitting your interest in various positions for the 2018 KPHA Leadership Election. Equally important is the responsibility of nominating KPHA members you respect and support for leadership roles.

The leadership positions up for election in 2018 are:

## Vice President

The Vice-President shall act in the capacity of the President-Elect in the absence of the President-Elect. Responsibilities shall include filling the unexpired term of the President-Elect should the latter office become vacant, assisting the President-Elect in the development of the program for the annual convention. The Vice-President shall act as Chair of the Policy Committee. The Vice-President shall serve for one (1) year before assuming the office of President-Elect; and,

Three (3) Directors of KPHA with information below from Article VI:

## **ARTICLE VI**

### **DIRECTORS, DELEGATES FROM AFFILIATE CHAPTERS AND IMMEDIATE PAST PRESIDENTS:**

**Section 1:** The term of office of the twelve (12) Directors of KPHA Inc., shall be four (4) years. These terms shall be staggered so that three (3) new Directors are elected each year.

**Section 2:** These Directors shall be elected by the membership at large through a paper or electronic ballot in accordance with ARTICLE VIII, Section 4.

**Section 3:** The newly elected Directors shall be installed at the annual meeting and shall assume duties within thirty (30) calendar days thereafter. No Director elected for a full term may be elected for the succeeding term.

**Section 4:** At no time shall the number of elected Directors be less than nine (9).

**Section 5:** A Director may designate a personal representative who is an active member of KPHA, Inc., to act as a proxy at any meeting or Board functions, by stating such in writing to the President or Executive Director of the KPHA, Inc.

---

*“You gain strength, courage and confidence by every experience in which you really stop to look fear in the face. You must do the thing you think you cannot do.”*

*-Eleanor Roosevelt*

---

*(Continued on page 17)*

Please e-mail one of the Nominations and Election Committee Members below with your nominations:

Noel Copeland  
[Noelt.coplen@ky.gov](mailto:Noelt.coplen@ky.gov)

Julia Davidson  
[Julia.davidson@barrenriverhealth.org](mailto:Julia.davidson@barrenriverhealth.org)

Kim Flora  
[Kim.flora@barrenriverhealth.org](mailto:Kim.flora@barrenriverhealth.org)

Dennis Chaney  
[Dennis.chaney@barrenriverhealth.org](mailto:Dennis.chaney@barrenriverhealth.org)

**Section 6:** Section Chairpersons, Affiliates, and immediate past president shall serve the term of one (1) year.

Our KPHA Bylaws governing our Leadership Election Process are as follows:

#### **ARTICLE VIII**

##### **ELECTION PROCEDURE:**

**Section 1:** The Nominating and Elections Committee of the KPHA, Inc. shall be composed of five(5) members representing various disciplines and representing different regions of the State and shall be appointed by the Board of Directors for a term of service of one (1) year. The Nominating and Elections Committee shall elect its own chair.

**Section 2:** The Nominating and Elections Committee shall submit to the Board of Directors two (2) nominees to fill the expiring term of each director and officer of the KPHA, Inc. If the Nominating and Elections Committee is unable to secure the required nominees, the Committee Chair shall submit a letter to the President defining the committees due diligence in attempting to secure the required nominations.

**Section 3:** A list of the nominees of the Nominating and Election Committee shall be distributed either by mail ballot or electronically to the membership at large of the KPHA, Inc. at least thirty (30) calendar days prior to the closing of nominations. Additional nominations to fill the expiring terms of the directors and officers of the KPHA, Inc. may be made during this period by submitting name(s) of said nominee(s) to the Chair of the Nominating and Elections Committee signed by at least twenty (20) current dues-paying members of the KPHA, Inc.

**Section 4:** After nominations are closed, either a paper or electronic ballot shall be made and sent at least forty-five (45) days prior to the annual meeting. Said ballots shall contain the alphabetical listing of names of all nominees to fill the expiring terms of the directors and officers of the KPHA, Inc. and shall be accompanied by a brief biological sketch of each nominee. When the nominees made as outlined in Section 2 and Section 3 above do not exceed the number of directors or officers expiring to allow for an election by membership, the President shall submit the nominees to the Board of Directors for confirmation by majority vote.

**Section 5:** All current individual member or designated representative of any organization member of the KPHA, Inc., shall be eligible for nomination and election to office and shall be allowed to cast one (1) vote. Local or regional organizational memberships shall be entitled to ten (10) voting delegates. Institutional memberships shall be allowed up to forty-five (45) voting delegates. State-wide organizational members and institutional members shall designate the names of their voting delegates at the time application is made for membership.

**Section 6:** Paper and electronic ballots are to be returned within thirty (30) calendar days to the Chair of the Nominating and Elections Committee. In order to be valid the paper ballot must be returned in the ballot envelope, signed and name of signee must be legible. Envelope must be returned or postmarked by the date specified in the letter

*(continued on page 18)*



transmitting the ballot. Electronic ballot submissions must be validated by containing the member identification number. The Nominating and Elections Committee shall tabulate the ballots and report the results at the annual meeting of the KPHA, Inc. Selectees will be notified by the Chair of the Nominating Committee prior to announcing results to the general membership at the annual meeting.

**Section 7:** In the event of a tie vote, final selectees will be determined by a mutually agreed upon flip of a coin.

Given the above information:

Nominations will close on Friday, February 2, 2018.

Ballots will be sent to the membership-at-large no later than Monday, March 12, 2018.

---

*Nominations are  
due Friday,  
February 2, 2018!*

---



### 2017-18 Student Chapter Award for Excellence

**NAME OF AWARD:** KPHA Student Chapter Award for Excellence

**AWARD PRIZE:** The highest rated chapter will receive a plaque and \$600. The second highest rated chapter will receive a plaque and \$300.

**DESCRIPTION:** The KPHA Student Chapter Award for Excellence is presented at the annual meeting to the student chapters that have demonstrated excellence during the preceding calendar year. Criteria for selecting the winning chapters include documentation of:

1. **Chapter Viability:** to include number of members, appropriate organizational structure, bi-laws, regular meetings with appropriate documentation of activities, e.g., minutes, and recognition by the university.
2. **On-campus Outreach:** engaging members in service to the chapter members, department, college and/or school, and the university, to include activities that enhance the academic program and professional development of the members.
3. **Off-campus Outreach:** engaging members in community service activities and show how these activities are related to the goals of public health, and promote and enhance the image of public health.
4. **Partnerships & Scholarly Pursuits:** membership and participation in professional organizations, and participation in scholarly pursuits, to include grants received, and paper and poster presentations.

**SCORING:** Each criterion above will be evaluated on a scale of 1 to 25 with 25 being highest. The numerical values of each criterion will be summed to obtain a final score. The highest possible score is 100.

**SUBMISSION:** All materials must be in a notebook (either physically or [electronically](#)) with sections clearly labeled. Neatness, completeness, and clarity of the documents will be considered in choosing the winners. All documentation as outlined above must be submitted for selection committee review no later than **Friday, March 16, 2018** to:

Janie Cambron  
Kentucky Department for Public Health, Public Safety Branch  
275 E. Main Street, HS1E-B  
Frankfort, KY 40621  
[Janie.Cambron@ky.gov](mailto:Janie.Cambron@ky.gov)

# About KPHA

The Kentucky Public Health Association, Inc. was organized in 1949 as a nonprofit, independent, voluntary organization. KPHA is in the capable position of confronting critical issues relating to legislation at the local, regional, and state level.

## Our Mission

To promote healthy communities through education, leadership, and commitment to excellence.

## Contact Us

**Kentucky Public  
Health Association**  
P.O. Box 4647  
Frankfort, KY 40604-4647

(502) 875-2255  
(502) 226-5155 (fax)

**President:**  
Mark Hensley  
[MarkA.Hensley@ky.gov](mailto:MarkA.Hensley@ky.gov)

**President Elect:**  
Sara Jo Best  
[SaraJ.Best@ky.gov](mailto:SaraJ.Best@ky.gov)

**Vice President:**  
Janie Cambron  
[Janie.Cambron@ky.gov](mailto:Janie.Cambron@ky.gov)

**Past President:**  
Drew Beckett  
[AndrewB.Beckett@ky.gov](mailto:AndrewB.Beckett@ky.gov)

**Secretary:**  
April Harris  
[Aharris@phaboard.org](mailto:Aharris@phaboard.org)

**Treasurer:**  
Lisa Pollock  
[LisaC.Pollock@ky.gov](mailto:LisaC.Pollock@ky.gov)

**Executive Director:**  
Steve Bing  
[Sbing.kpha@gmail.com](mailto:Sbing.kpha@gmail.com)

**Office Manager:**  
Jill LeMaster  
[Jlemaster.kpha@gmail.com](mailto:Jlemaster.kpha@gmail.com)

**Membership Specialist:**  
Carla Tillett  
[Ctillett.kpha@gmail.com](mailto:Ctillett.kpha@gmail.com)

**Newsletter Editor:**  
Judy Mattingly  
[JudyA.Mattingly@ky.gov](mailto:JudyA.Mattingly@ky.gov)

Visit us on the web at:  
[www.kpha-ky.org](http://www.kpha-ky.org)



**KPHA**  
Kentucky Public Health Association

**"CREATING RESILIENT AND HEALTHY  
COMMUNITIES"**

**KPHA 2018**

**ANNUAL CONFERENCE  
COVINGTON, KY | APRIL 25-27**

**CALL FOR ABSTRACTS NOW OPEN!**